

# AM307 AM319



## Indoor Air Quality

Sleek, Attractive and Compact Design

### AM307 measure:

- Temperature
- Humidity
- CO2
- TVOC
- Light (Illumination)
- Motion (PIR)
- Barometric pressure

### AM319 measure the above as AM307 and in addition:

- PM25, PM10
- Formaldehyde or Ozone

Both models are widely used in offices, stores, classrooms, hospitals, kindergartens, etc.

AM307 applies 4 batteries, providing up to three years battery life.

AM319 is powered by mains.

Both models are equipped with

- NFC for mobile app configuration (Android and iOS).
- USB-C and NFC is available for configuration via Notebook.

The sensors are compliant with standard LoRaWAN® gateways and network servers

# AM307 AM319



## Indoor Air Quality

Sleek, Attractive and Compact Design

### Wireless transmission

Technology	LoRaWAN®
Frequency	CN470/IN865/RU864/EU868/US915/AU915/KR920/AS923
Tx Power	16dBm(868)/22dBm(915)/19dBm(470)
Sensitivity	-137dBm @300bps
LoRa class	AM307 Class A AM319 Class C

### Temperature

Range	-40°C to + 85°C
Accuracy	±1°C
Resolution	0.1°C

### Humidity

Range	0% to 100% RH
Accuracy	±3%
Resolution	0.5% RH

### CO2 (Carbon Dioxide)

Range	400 - 5000 ppm	400 - 2000 ppm
Accuracy	±30 ppm or ±3 % of reading	±50 ppm or ±5 % of reading
Resolution	1 ppm	

Specifications are according to the manufacturer and might change without any notice

**Sing Go Tech**

# AM307 AM319



## Indoor Air Quality

Sleek, Attractive and Compact Design

### TVOC (Total Volatile Organic Compound)

Range 0 - 500 (IAQ index)

Accuracy ±15 %

### Motion (Passive infrared)

Detection Area 80 ° Horizontal, 55 ° Vertical

Detection Distance 5 m

Status Vacant/Occupied

### Light (Illumination)

Range 60000 lux (Displayed as 6 levels, 0 to 5)

### Barometric pressure

Range 300 - 1100 hPa (-40°C - 85°C)

Accuracy ±1 hPa

Resolution 0.1 hPa

### PM2.5, PM10 – AM319 only

Range 0 - 1000 µg/m<sup>3</sup>

Accuracy 0-100 (±10µg/m<sup>3</sup>), 100-1000 (±10 %)

Resolution 1 µg/m<sup>3</sup>

# AM307 AM319



## Indoor Air Quality Sleek, Attractive and Compact Design

**Formaldehyde (HCHO) – AM319 only – Choose between Formaldehyde OR Ozone**

**Range** 0 - 6 mg/m3

**Accuracy** ±10 %

**Resolution** 0.01 mg/m3

**Ozone (O3) – AM319 only – Choose between Formaldehyde OR Ozone**

**Range** 0 - 10 ppm

**Accuracy** ±5 % FS (O3 electrochemical sensor working life is 2 years)

**Resolution** 0.01 ppm

### Physical characteristics

**Power supply** AM307: 4 × 2700 mAh ER14505 Li-SOCl2 battery  
AM319: 5V/1A by Type-C Port

**Operating Temp.** -20°C to +60°C (E-ink screen 0°C - 40°C)

**Relative humidity** 10% to 90% non-condensing

**Ingress protection** IP30

**Dimension** 100.8 × 114 × 22 mm (3.97 × 4.49 × 0.87 in)

**Installation** Wall mounting



Gateway UG65



Specifications are according to the manufacturer and might change without any notice

**Sing Go Tech**

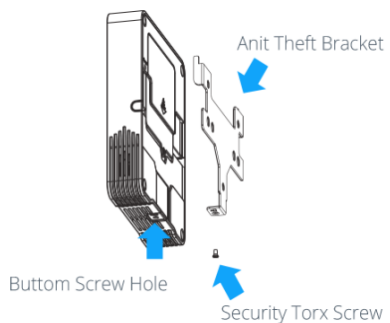
# AM307 AM319



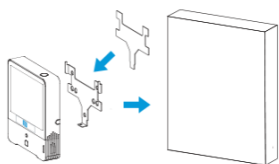
## Indoor Air Quality Sleek, Attractive and Compact Design

### Display

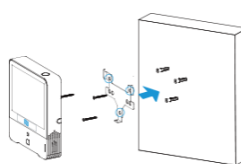
Display	4.2-inch black & white E-Ink screen
Button	1 × Power button + 1 × Reset button
LED and buzzer	1 × Traffic light status indicator + 1 × Buzzer
Configuration	Mobile App via NFC PC software via NFC or USB Type-C port



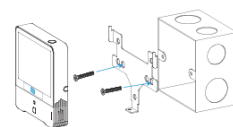
Preventing the device be taken  
away thoughtlessly



Fixed by 3M Tape



Wall Mounting



86Box Mounting